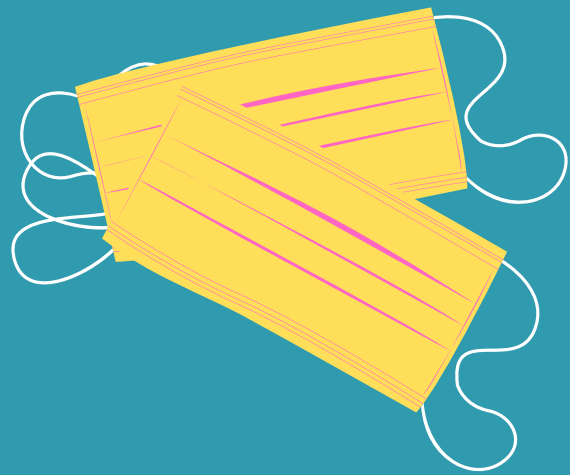


Government Update: Masks



- It is mandatory within national territory to use respiratory protection in enclosed places that are accessible to the public, including means of transport, and in any circumstance in which it is not possible to continuously guarantee social distance.
- The regional ordinance of 30 April makes it obligatory to wear a mask in Emilia Romagna in locations that are open to public as well as locations where it is not possible to maintain at least 1 meter of distance.
- Excluded from the rule are children under the age of six as well as individuals with conditions that are incompatible with the continuous use of a mask.
- Community masks can be used, disposable masks or washable masks, even those that are home-made so long as they are: in multilayer materials suitable to provide an adequate barrier and guarantee comfort and breathability and have an adequate shape and adherence that allow to cover from the chin to the above the nose.
- The use of community masks should be taken with other recommended protection measures aimed at reducing contagion (such as social distance and constant and accurate hand washing) which remain unchanged and are priorities.

SOURCE:

"PHASE TWO: MEASURES ENFORCED AS OF MAY 4 2020"

<http://www.regione.emilia-romagna.it/coronavirus>